



Bone Graft Substitute

SurgyBone

100% Beta-Tricalcium Phosphate (β -TCP)



Synthetic osteoconductive bone graft substitute

SurgyBone is a synthetic BetaTcP osteoconductive bone graft substitute used as a material to secure the sufficient space in the affected area gradually replacing with regenerated bone tissue. New bone replacement possible due to biodegradable properties.

As a 100% synthetic material, there is no risk of immune response and infection from humans or animals.

The fast blood absorption and new bone regeneration space is secured through the pore structure of various sizes.

– Features

- Maintains volume
- Resorbable
- No risk of infection due to 100% synthetic material
- Various sizes and shapes

– Indications

Cylinder / Tapered Cylinder

Total Knee Replacement (TKR)

Wedge

High Tibial Osteotomy (HTO)

Chips / Granules

Application site (knee degenerative arthritis)

Used for reinforcing bone defects and bone extraction sites due to accidents

- * Spine
- * Calcaneus fracture
- * Distal & Proximal femur, Proximal tibia
- * Hand, foot, etc.

– Physicochemical properties

Porosity

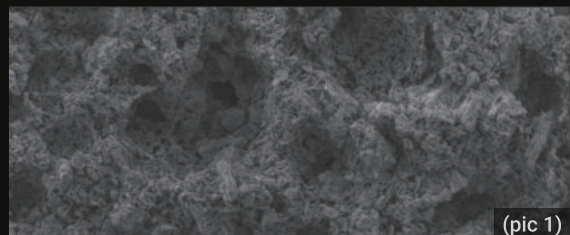
The porosity of SurgyBone is 50~70% for both granules and wedge/cylinder types.

Macropores

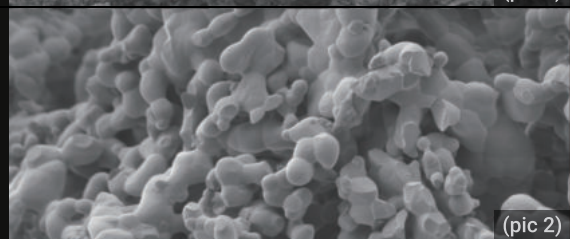
The sizes of macropores of SurgyBone are between 100 to 450 μ m (pic 1)

Micropores

The sizes of micropores are smaller than 10 μ m (pic 2)



(pic 1)




(pic 2)

Compression Strength is 3~5MPa

– Product Specification

Surgybone is supplied in various types : wedge, cylinder / taper cylinder, chip / granules

1. Wedge Spacer

No	Model NO.	Product photo	Size (mm)
1	w735		7(a)x35(b)x25(c)
2	w1035		10(a)x35(b)x25(c)
3	w1335		13(a)x35(b)x25(c)
4	w745		7(a)x45(b)x35(c)
5	w1045		10(a)x45(b)x35(c)
6	w1345		13(a)x45(b)x35(c)


2. Cylinder

No	Model NO.	Product photo	Size (mm)
1	C2610		25(a)x10(b)
2	C1120		11(a)x20(b)
3	C1620		16(a)x20(b)
4	C1130		11(a)x30(b)
5	C1630		16(a)x30(b)

3. Taper Cylinder

No	Model NO.	Product photo	Size (mm)
1	TC11610		11(a)x16(b)x10(c)
2	TC11620		11(a)x16(b)x20(c)
3	TC11630		11(a)x16(b)x30(c)

4. Chip/Granules

No	Model NO.	Product photo	Volume (cc)	Size (mm)
1	OS0320		3	2~4
2	OS0340			4~6
3	OS0360			6~8
4	OS0520		5	2~4
5	OS0540			4~6
6	OS0560			6~8
7	OS1020		10	2~4
8	OS1040			4~6
9	OS1060			6~8
10	OS1520		15	2~4
11	OS1540			4~6
12	OS1560			6~8
13	OS2020		20	2~4
14	OS2040			4~6
15	OS2060			6~8
16	OS3020		30	2~4
17	OS3040			4~6
18	OS3060			6~8